

Bifamiliare
SANDRIGO
Via Fratte



SANTINI
COSTRUZIONI

BIFAMILIARE A



BIFAMILIARE B



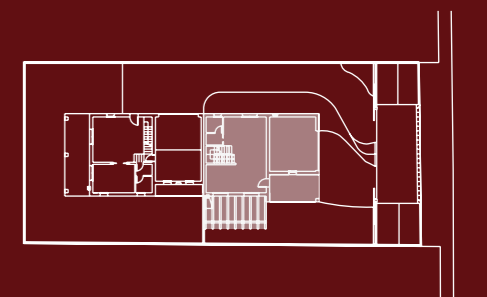
SISTEMAZIONE ESTERNA



BIFAMILIARE A SISTEMAZIONE ESTERNA



UBICAZIONE



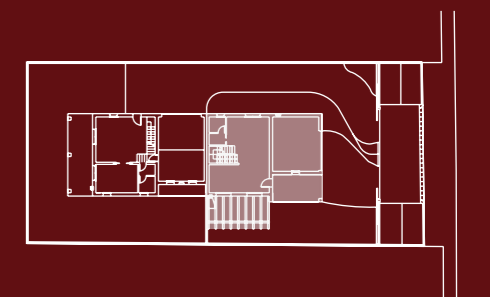
scala 1:50

BIFAMILIARE A PIANO TERRA

SUPERFICI

1	ANGOLO COTTURA	
2	SOGGIORNO	53.31 MQ
3	BAGNO	04.20 MQ
4	ANTI	02.40 MQ
5	GARAGE	36.96 MQ
6	PORTICO	19.64 MQ
7	POMPEIANA	24.38 MQ

UBICAZIONE



scala 1:50



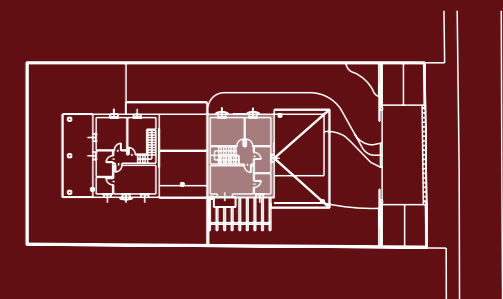
BIFAMILIARE A PIANO PRIMO



SUPERFICI

1	CAMERA	10.54 MQ
2	CAMERA	13.94 MQ
3	CAMERA	17.68 MQ
4	BAGNO	04.90 MQ
5	BAGNO	06.30 MQ
6	DISIMPEGNO	04.04 MQ
7	TERRAZZO	02.95 MQ

UBICAZIONE

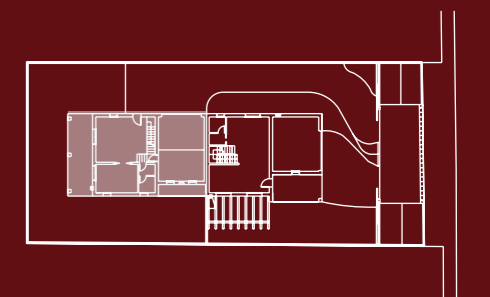


scala 1:50

BIFAMILIARE B SISTEMAZIONE ESTERNA



UBICAZIONE



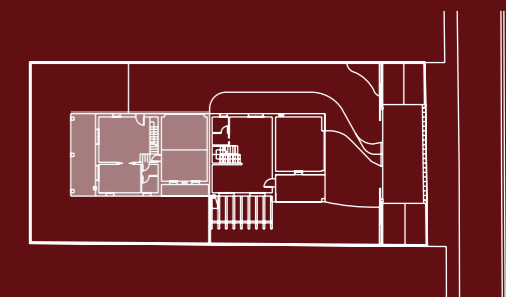
scala 1:50

BIFAMILIARE B PIANO TERRA

SUPERFICI

1	CUCINA	17.60 MQ
2	SOGGIORNO	32.35 MQ
3	BAGNO	04.30 MQ
4	ANTI	02.40 MQ
5	GARAGE	43.29 MQ
6	LOGGIA	08.05 MQ
7	PORTICO	29.52 MQ

UBICAZIONE



scala 1:50



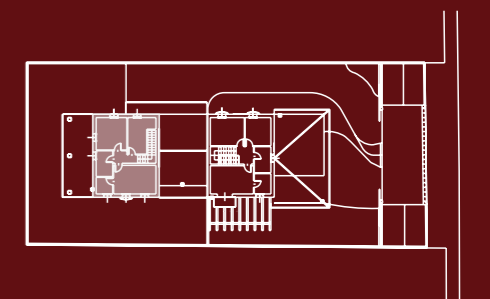
BIFAMILIARE B PIANO PRIMO



SUPERFICI

1	CAMERA	11.66 MQ
2	CAMERA	14.43 MQ
3	CAMERA	17.60 MQ
4	BAGNO	06.00 MQ
5	BAGNO	04.20 MQ
6	DISIMPEGNO	03.70 MQ

UBICAZIONE



scala 1:50